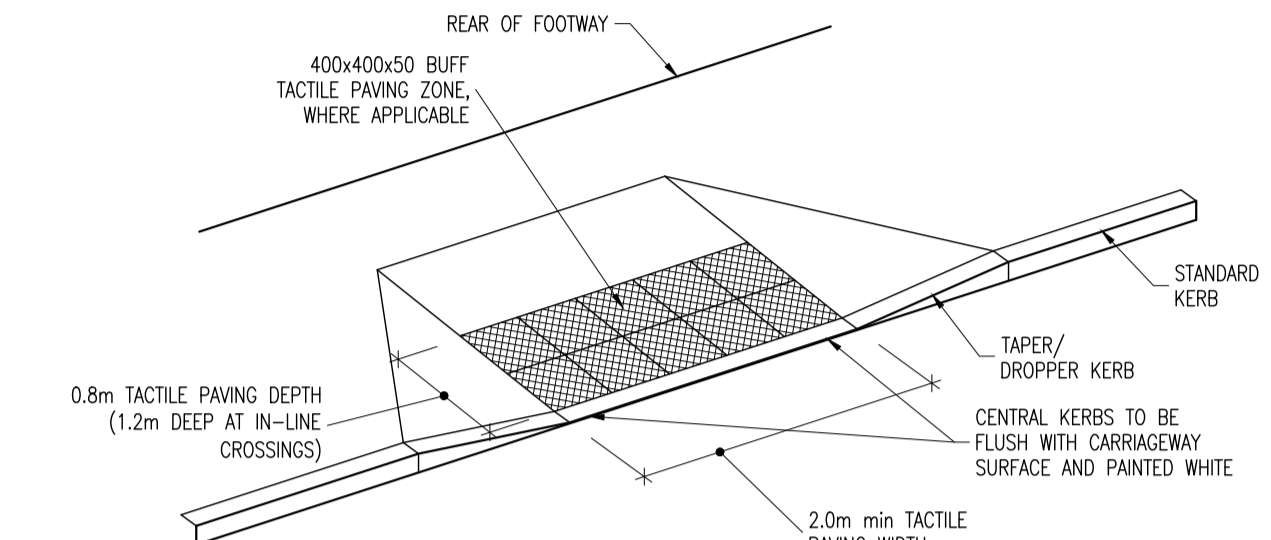
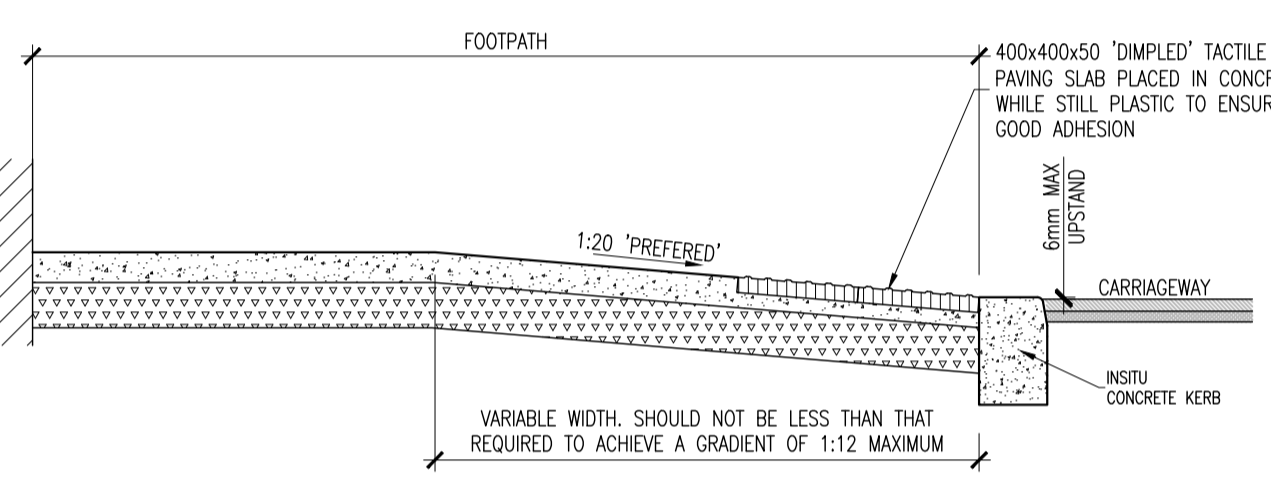


**CONTROLLED DISHED CROSSING WITH TACTILE PAVING**  
SCALE 1:50



**UNCONTROLLED DISHED CROSSING WITH TACTILE PAVING**  
SCALE 1:50



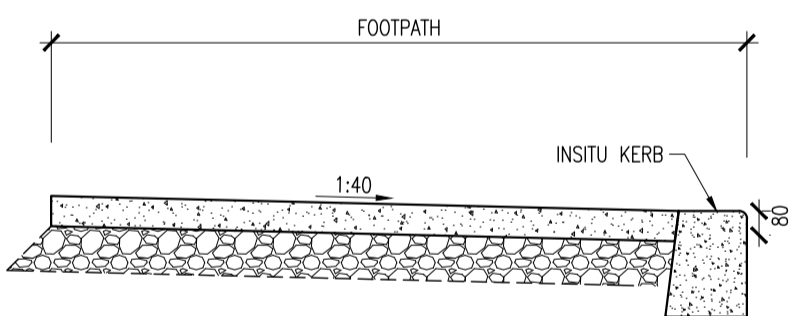
**TYPICAL SECTION THROUGH DISHED CROSSING**  
SCALE 1:25

**CONCRETE FOOTPATH**

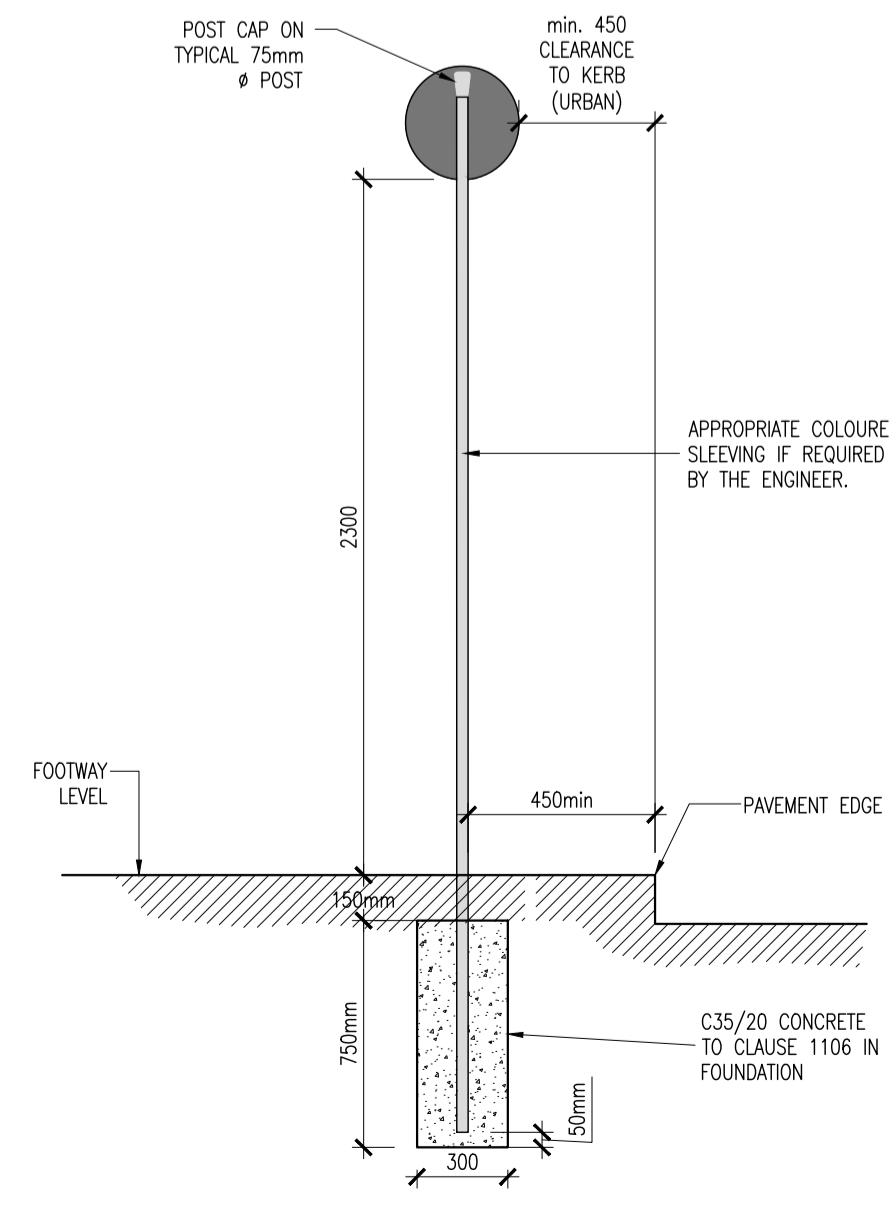
**100mm** CONCRETE PAVEMENT C40 AIR ENTRAINED OR C50 NON AIR ENTRAINED / EXPOSURE CLASS XF4 TO CL 1106(NRA) ON MINIMUM

**150mm** COMPACTED CLAUSE 808(NRA), LAID TO FALL WITH BLENDED SURFACE

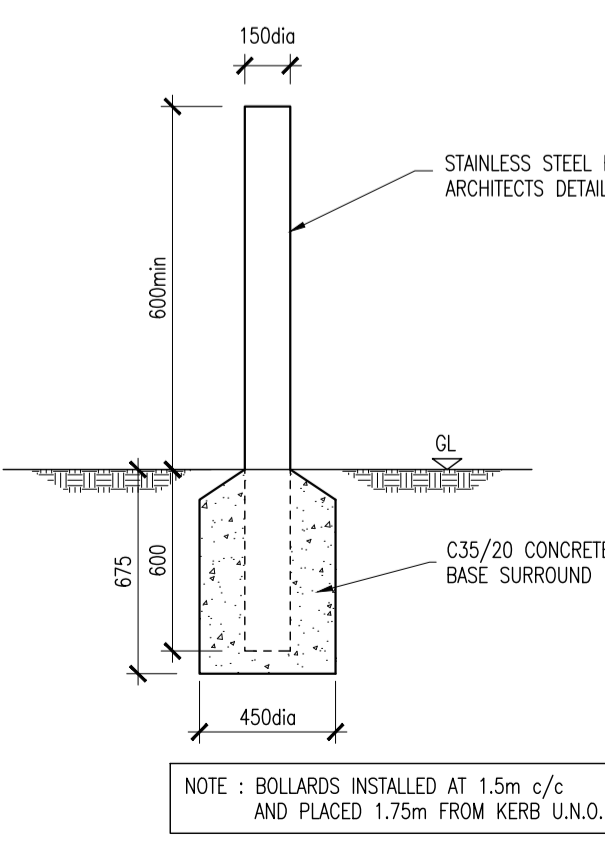
JOINTS TO BE FORMED WITH TWO LAYERS OF BITUMINOUS FELT FOR FULL SLAB DEPTH AT 3m CENTRES (JOINTS TO COINCIDE WITH JOINTS IN THE KERB AND POSITIONED AT CORNERS ETC LABEL TO CRACKING). FINISH BY FLOATING WITH WOODEN TROWEL WHILE STILL GREEN THEN LIGHTLY BRUSHED WITH A BASS BROOM TO PRODUCE REQUIRED SURFACE TEXTURE TO WITHIN 100mm OF ALL JOINTS & EDGES.



**TYPICAL CONCRETE FOOTPATH DETAIL**  
SCALE 1:25

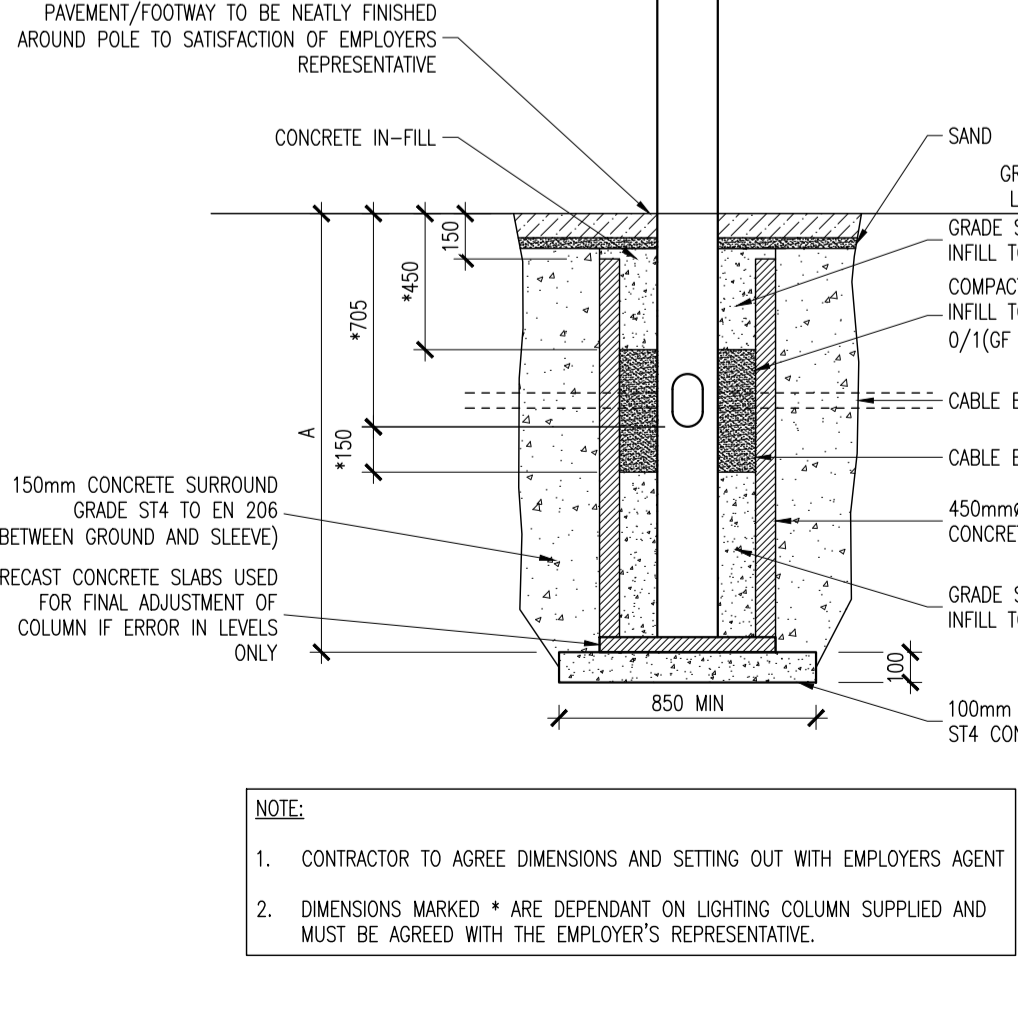


**ROAD SIGN (SINGLE POST)**  
SCALE 1:25

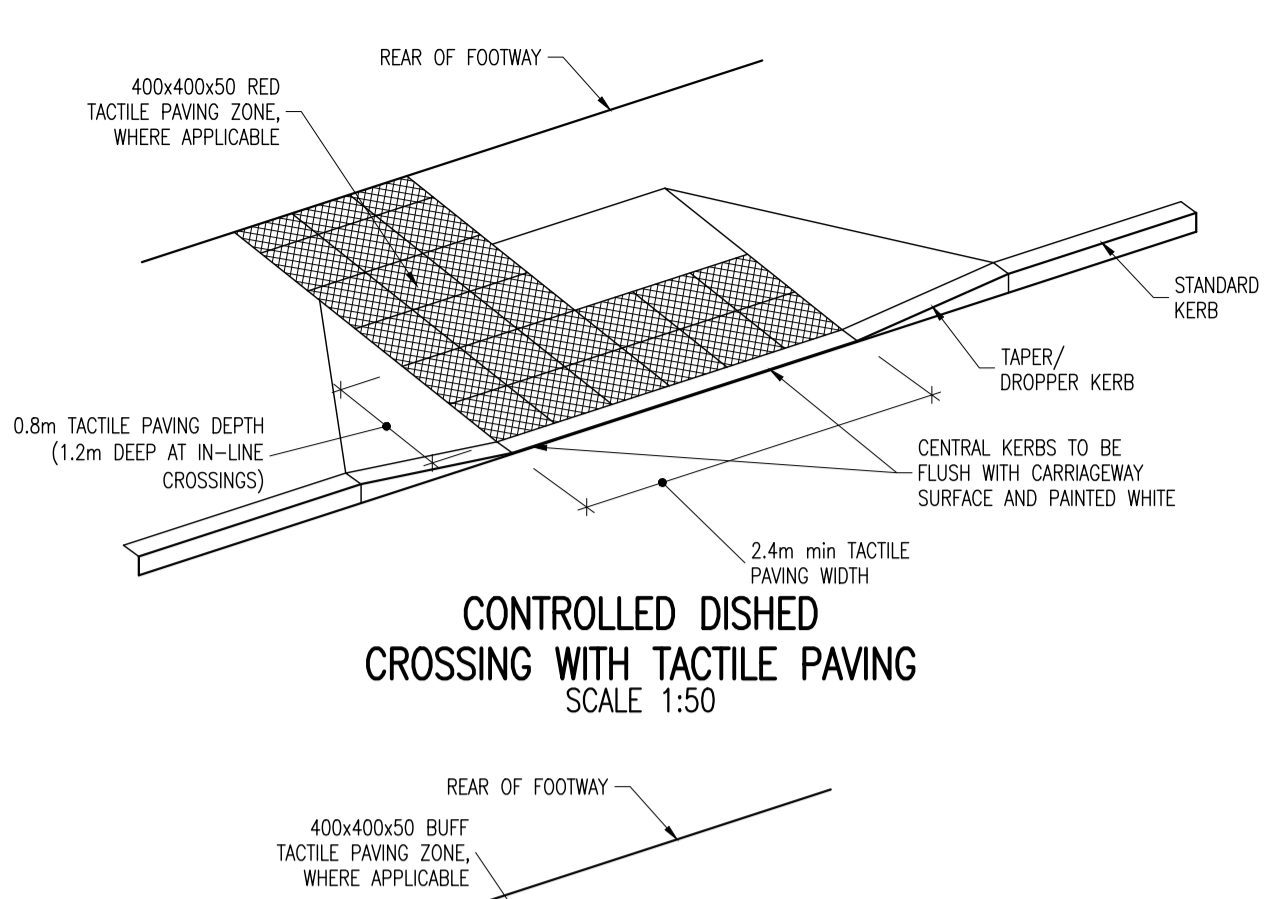


**TRAFFIC BOLLARD DETAIL**  
SCALE 1:25

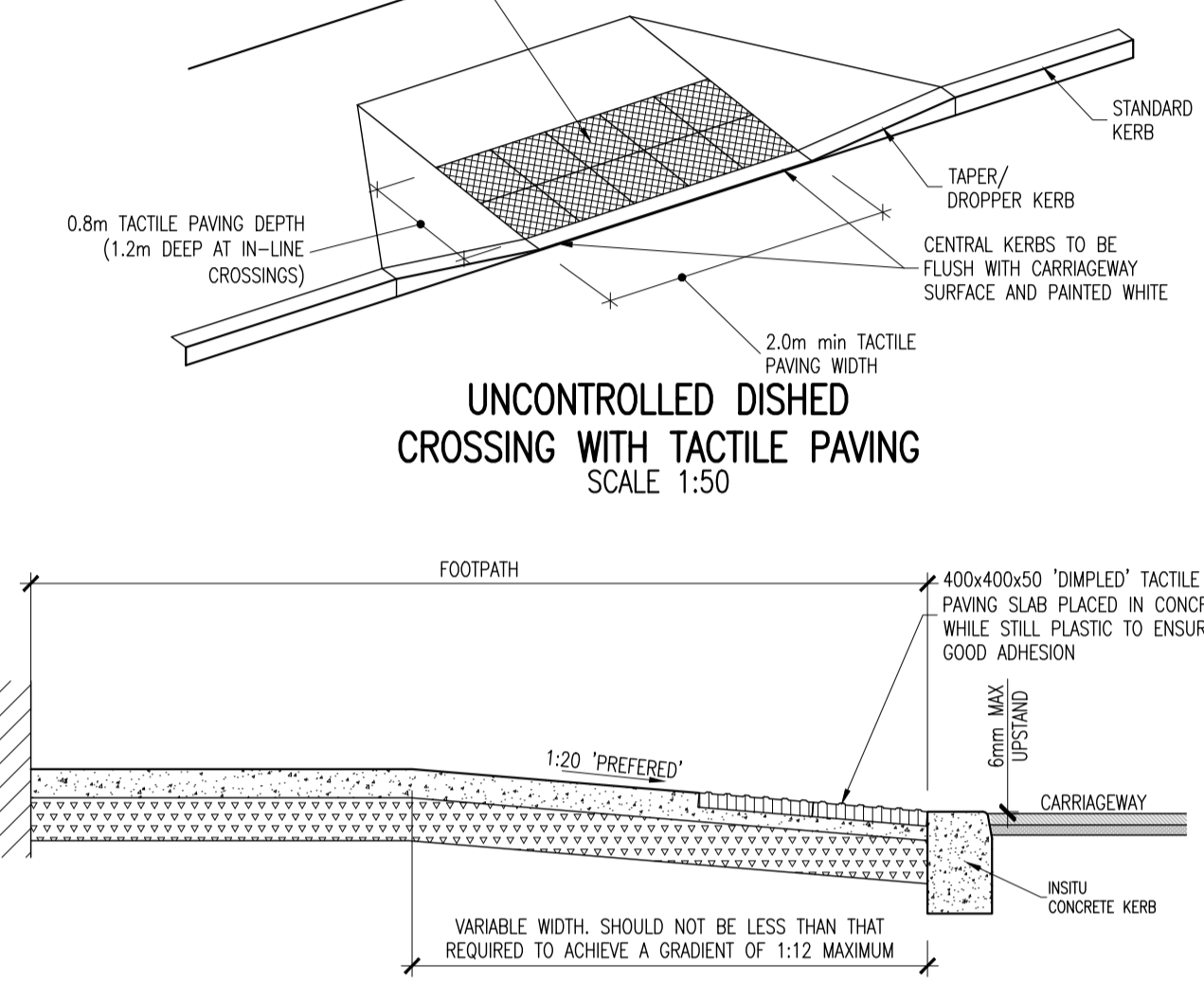
COLUMN HEIGHT	6.0m	8.0m	10.0m	12.0m
FOUNDATION DEPTH (A)	1.5m	1.8m	2.1m	2.4m



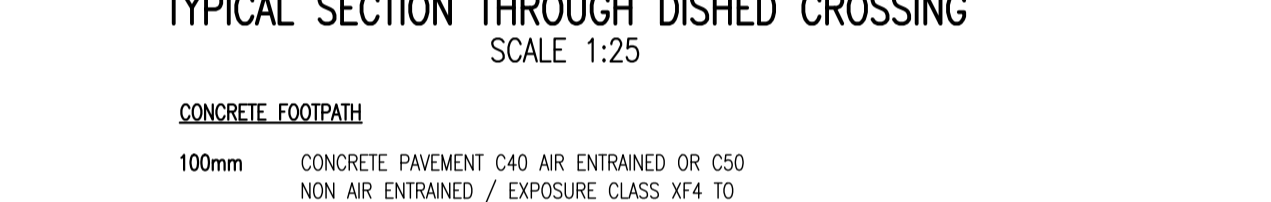
**TYPICAL LAMP STANDARD FOUNDATION**  
SCALE 1:25



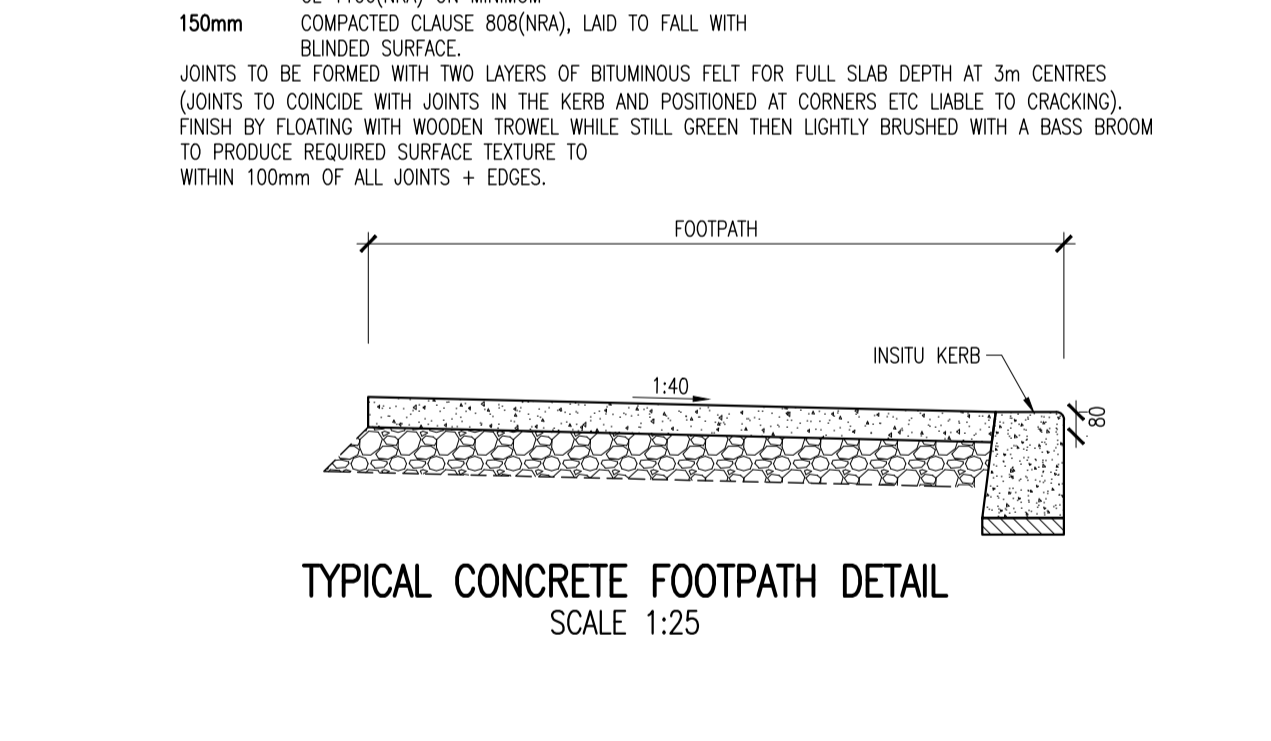
**INSITU CONCRETE KERB DETAIL**  
SCALE 1:10



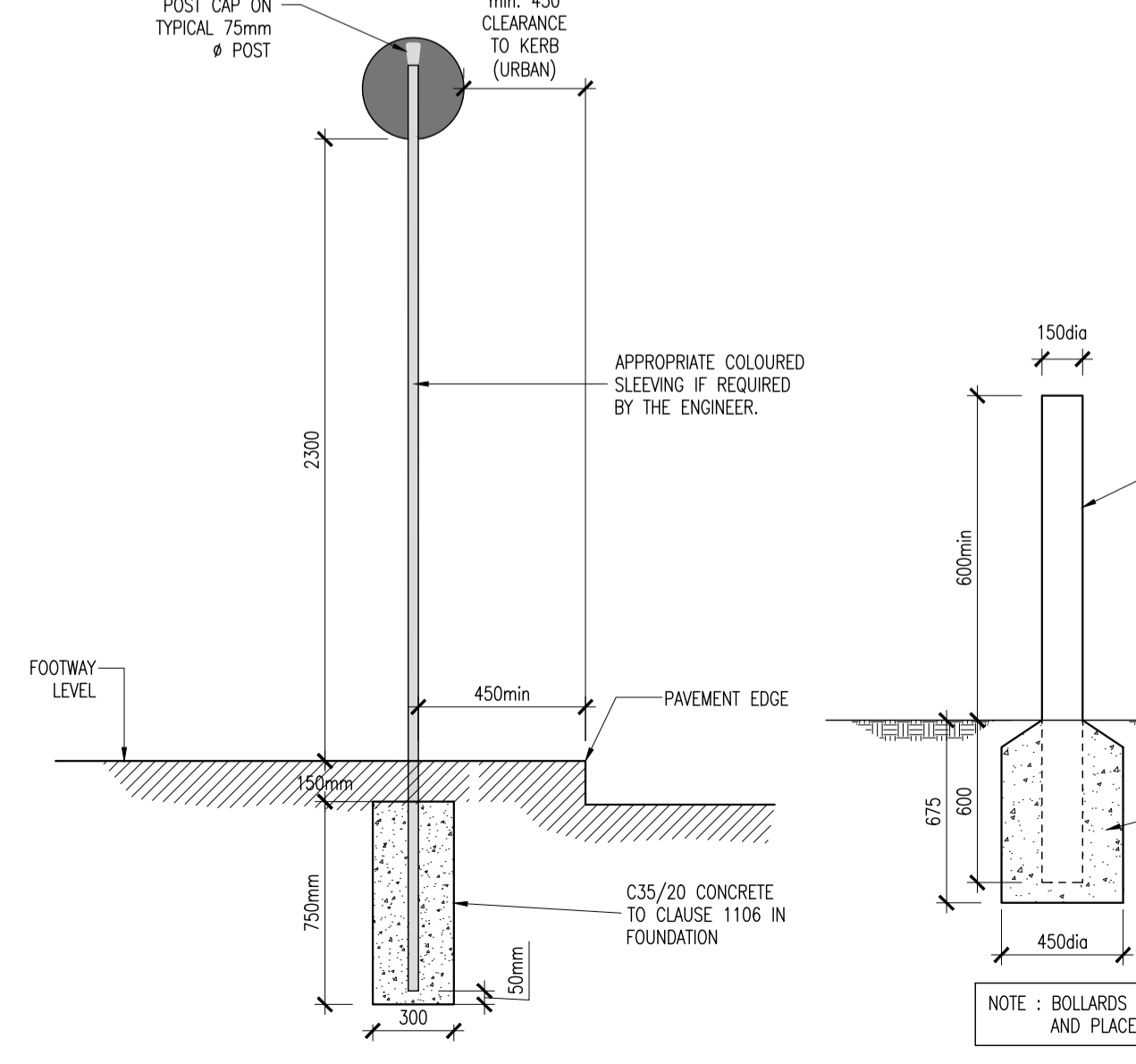
**EDGE KERB DETAIL (DBM TO PAVING BLOCK)**  
SCALE 1:10



**FLUSH KERB DETAIL**  
SCALE 1:10



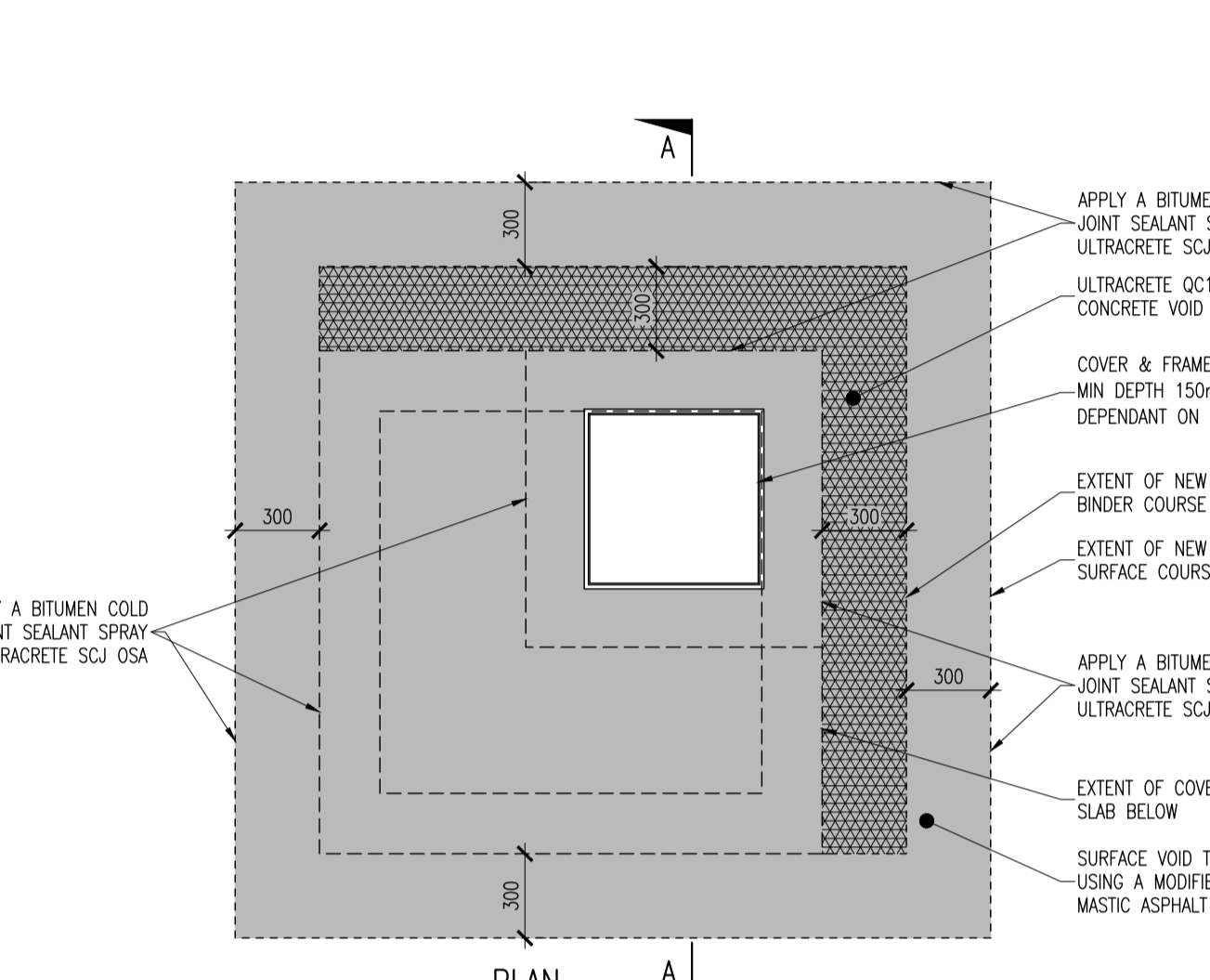
**PRECAST KERB DETAIL**  
SCALE 1:10



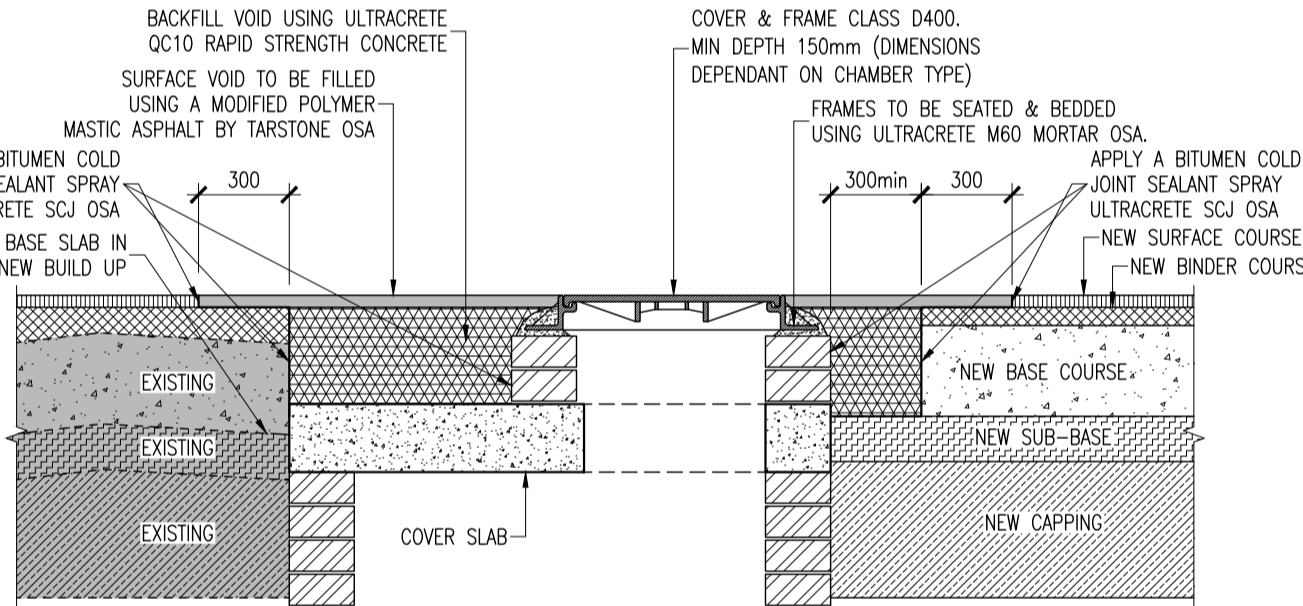
**GULLY CONNECTION DETAILS**  
SCALE 1:25



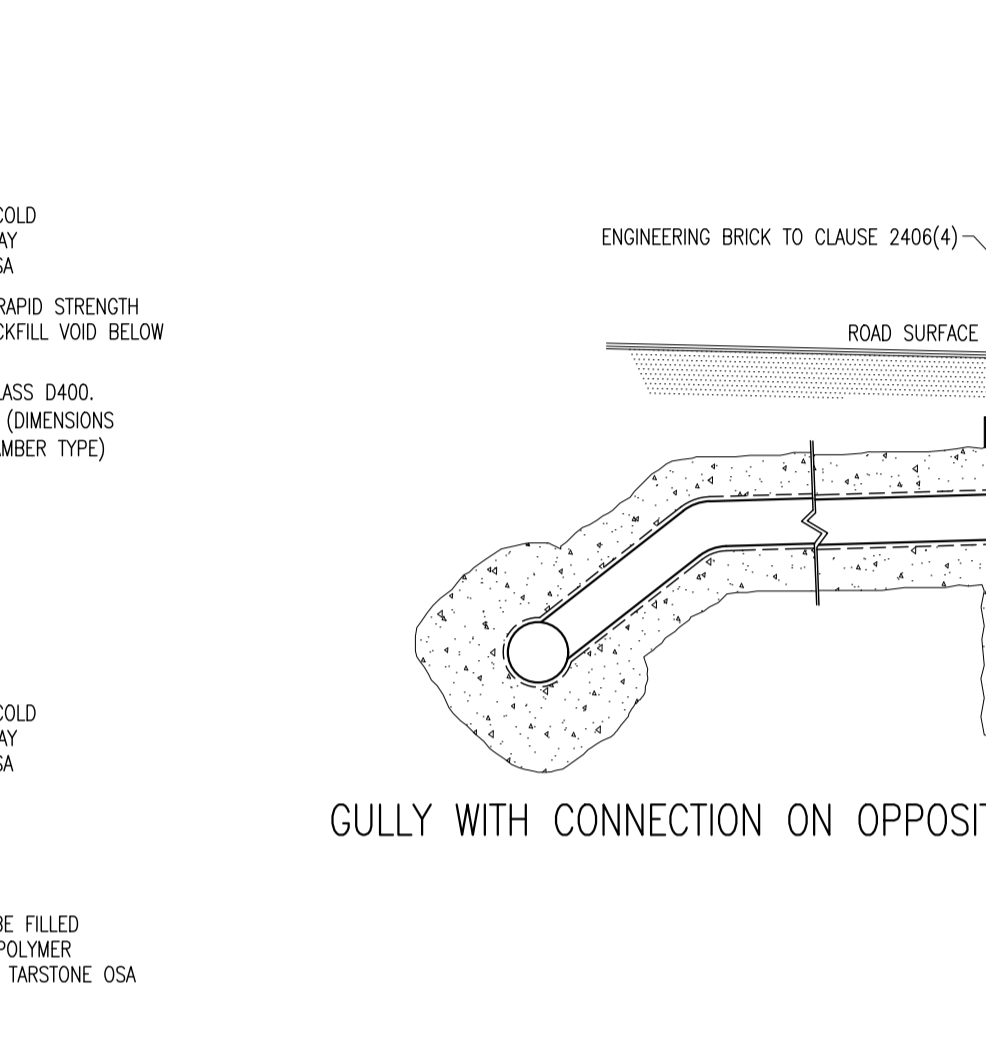
**TYPICAL ASPHALT FOOTPATH DETAIL**  
SCALE 1:25



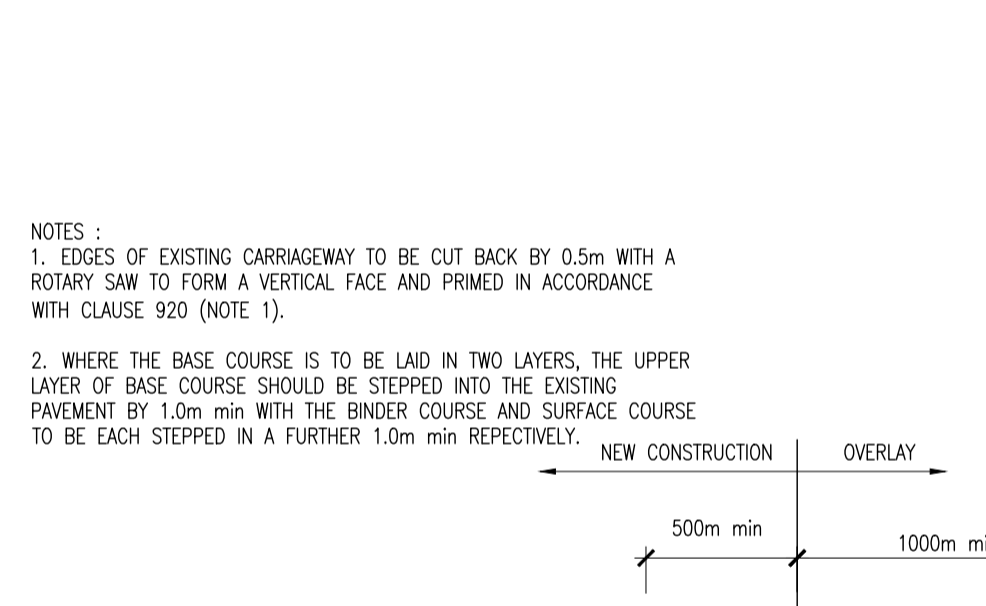
**TYPICAL MANHOLE COVER WITH MASTIC SURROUND (TO BE APPLIED AT ALL EXISTING & NEW MANHOLES IN TRAFFICKED AREAS)**  
SCALE 1:25



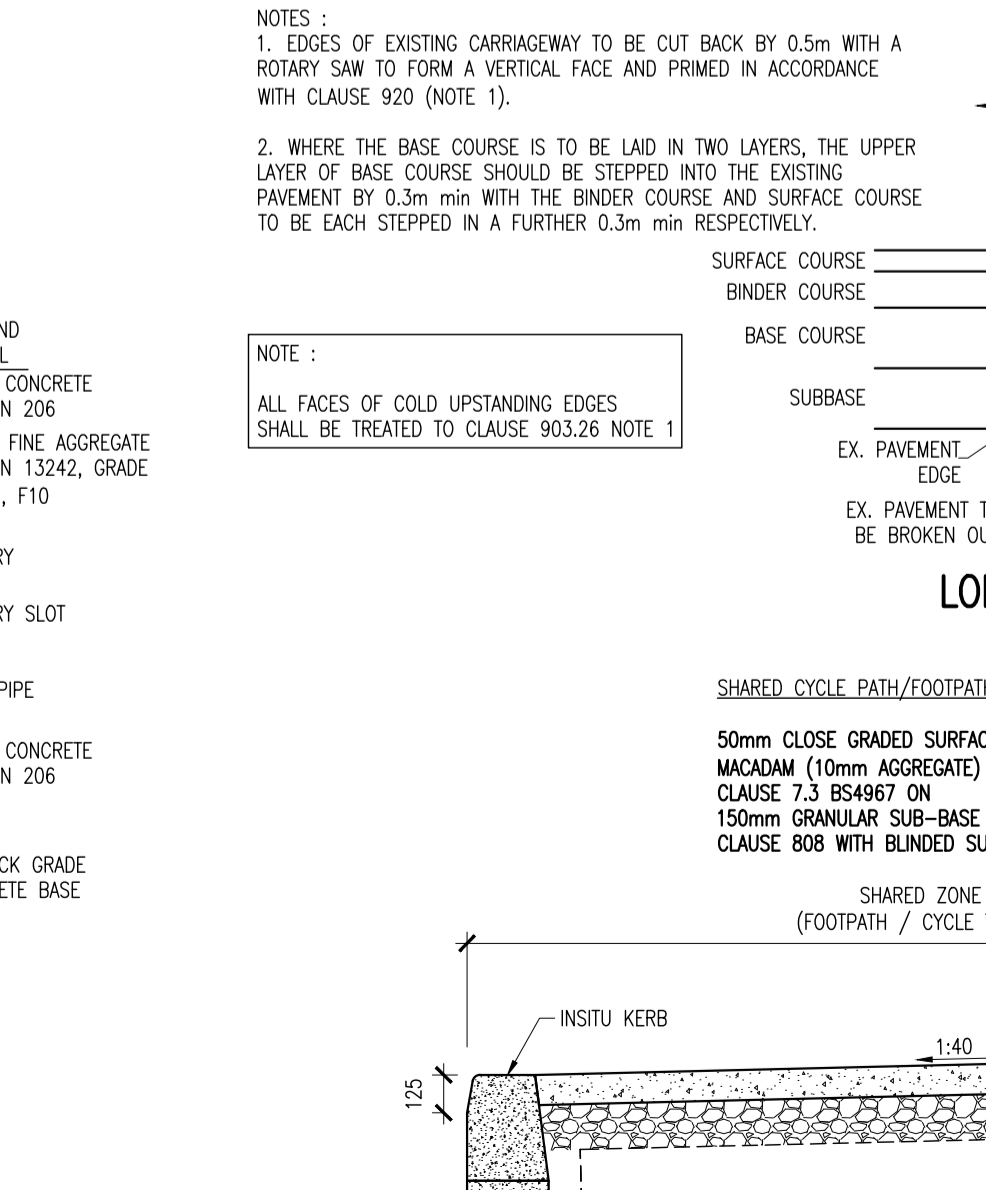
**TYPICAL MANHOLE COVER WITH MASTIC SURROUND (TO BE APPLIED AT ALL EXISTING & NEW MANHOLES IN TRAFFICKED AREAS)**  
SCALE 1:25



**TRANSVERSE JOINT DETAIL**  
SCALE 1:25



**LONGITUDINAL JOINT DETAIL**  
SCALE 1:25

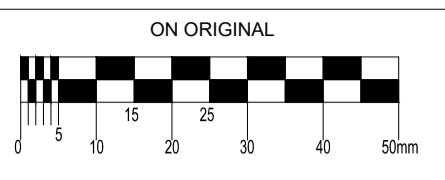


**POST POCKET DETAIL (SIGN > 1.2m HIGH; MAX SIGN AREA = 1.0m²)**  
SCALE 1:25



**TYPICAL ASPHALT FOOTPATH DETAIL**  
SCALE 1:25

© COPYRIGHT OF THIS DRAWING IS RESERVED BY DBFL CONSULTING ENGINEERS. NO PART SHALL BE REPRODUCED OR TRANSMITTED WITHOUT THEIR WRITTEN PERMISSION.



**NOTES:**

- CLOSE GRADED SURFACE COURSE MACADAM SHALL COMPLY WITH THE REQUIREMENTS OF CLAUSE 912 OF THE NRA'S SPECIFICATION FOR ROAD WORKS AND SHALL SATISFY THE REQUIREMENTS OF TABLE 9/2. IT SHALL BE LAID & COMPACTED IN ACCORDANCE WITH CLAUSE 901 & CLAUSE 702
- DENSE BITUMEN MACADAM BINDER COURSE SHALL COMPLY WITH THE REQUIREMENTS OF CLAUSE 906 OF THE NRA'S SPECIFICATION FOR ROAD WORKS & SHALL SATISFY THE REQUIREMENTS OF TABLE 9/1. IT SHALL BE LAID & COMPACTED IN ACCORDANCE WITH CLAUSE 901 & CLAUSE 702.
- SUB-BASE MATERIAL SHALL COMPLY WITH CLAUSE 808 GRANULAR MATERIAL TYPE B OF NRA'S SPECIFICATION FOR ROAD WORKS (SRW) & SHALL SATISFY THE REQUIREMENTS OF TABLE 8/4 & 8/2.
- SUB FORMATION & CAPPING MATERIAL SHALL COMPLY WITH CLAUSE 613 OF THE NRA'S SPECIFICATION FOR ROAD WORKS & SHALL SATISFY THE REQUIREMENTS OF TABLE 6/1 & 6/2
- STONE BLINDING WITH 2-6.3mm AGGREGATE SHALL MEET THE FOLLOWING GRADINGS, IN ACCORDANCE WITH EN 13242

BS SIEVE SIZE (mm)	% BY MASS PASSING
14	100
10	98-100
6.3	80-99
2.0	0-20
1.0	0-5

BS SIEVE SIZE (mm)	% BY MASS PASSING
40	100
31.5	98-100
20	90-99
10	25-70
4	0-15
5	0-5

- ANY ROADS PROPOSED TO BE USED FOR CONSTRUCTION TRAFFIC ARE TO HAVE INCREASED DEPTH OF SUB-BASE FOR THE DURATION OF CONSTRUCTION IN ACCORDANCE WITH DBFL SPECIFICATIONS.
- ALL WORKS SHALL BE COMPLETED IN ACCORDANCE WITH THE REQUIREMENTS OF THE LOCAL AUTHORITY.
- ALL GEOTRIDS TO BE LAID IN ACCORDANCE WITH MANUFACTURERS SPECIFICATIONS.
- ALL PERMEABLE PAVING SUB-FORMATION TO BE LAID TOWARD DRAINAGE PIPEWORK.

rev	date	description	RMC	EDA
P01	25-08-21	PLANNING		

client approval: A - Approved, B - Approved with comments, C - Do not use

suitability: S2 - INFORMATION, PLANNING

DBFL Consulting Engineers  
Civil, Structural & Transportation Engineering  
www.dbfl.ie

SANDFORD ROAD, MILLTOWN

TYPICAL ROAD CONSTRUCTION DETAILS SHEET 2

SANDFORD LIVING LIMITED

designed by BK, author ICD, scale AS NOTED, sheet size A1, drawing no. 190226-DBFL-RD-SP-DR-C-5002, revision P01